

## Face Shape



Diamond

Inverted  
Triangle

Heart



Rectangular

Square

Pear/Triangle

Oblong

Oval

Round

## Facial Features

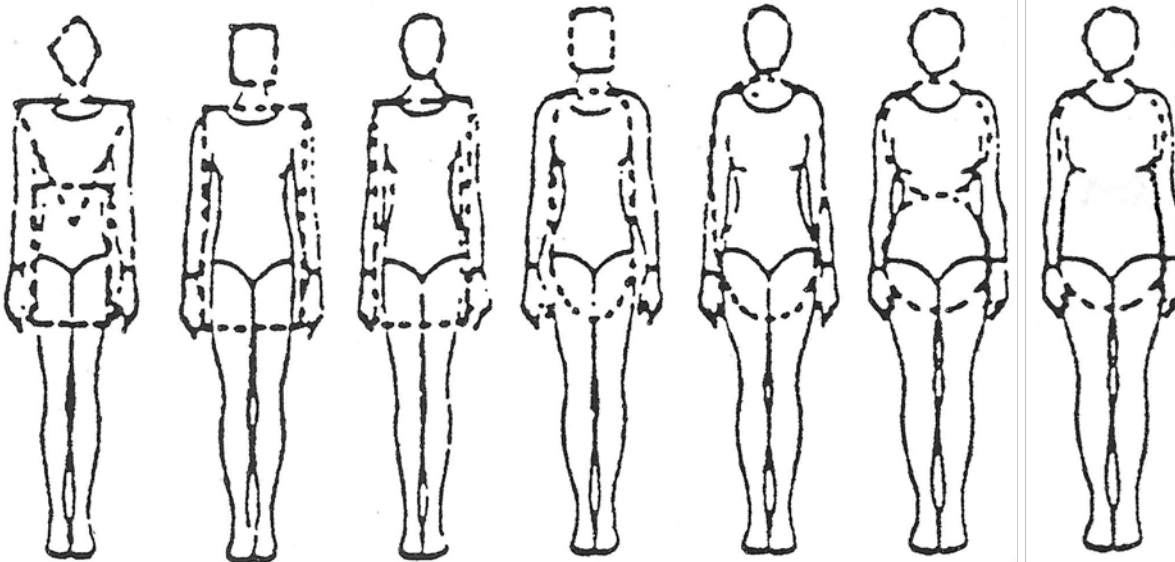
☐ Fine ☐ Average ☐ Broad

☐ **STRAIGHT:** Diamond, Inverted Triangle, Rectangular, Square  
Sharp nose, chin, cheekbones, square jaw with angular nose

☐ **COMBINATION:** Pear/Triangle, Oblong, Oval  
Soft angles, turned up nose on angular shaped face, angular features on oval face

☐ **CURVED:** Heart & Round  
Medium to small nose, curved or straight, rounded cheeks, cheekbones, full curvy mouth

## Body Type



Inverted Triangle

Rectangle

Curve/Rectangle

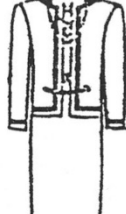
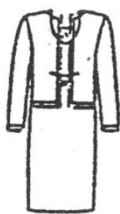
Triangle

Neat Hourglass

Full Hourglass

Ellipse

## Body Scale



☐ Petite  
(5'3" and under)

☐ Average  
(5'4"—5'7")

☐ Grande  
(5'8" and over)

## Bone Size

☐ Small ☐ Medium ☐ Large

## Overall Impression

☐ Straight ☐ Softened Straight ☐ Curved